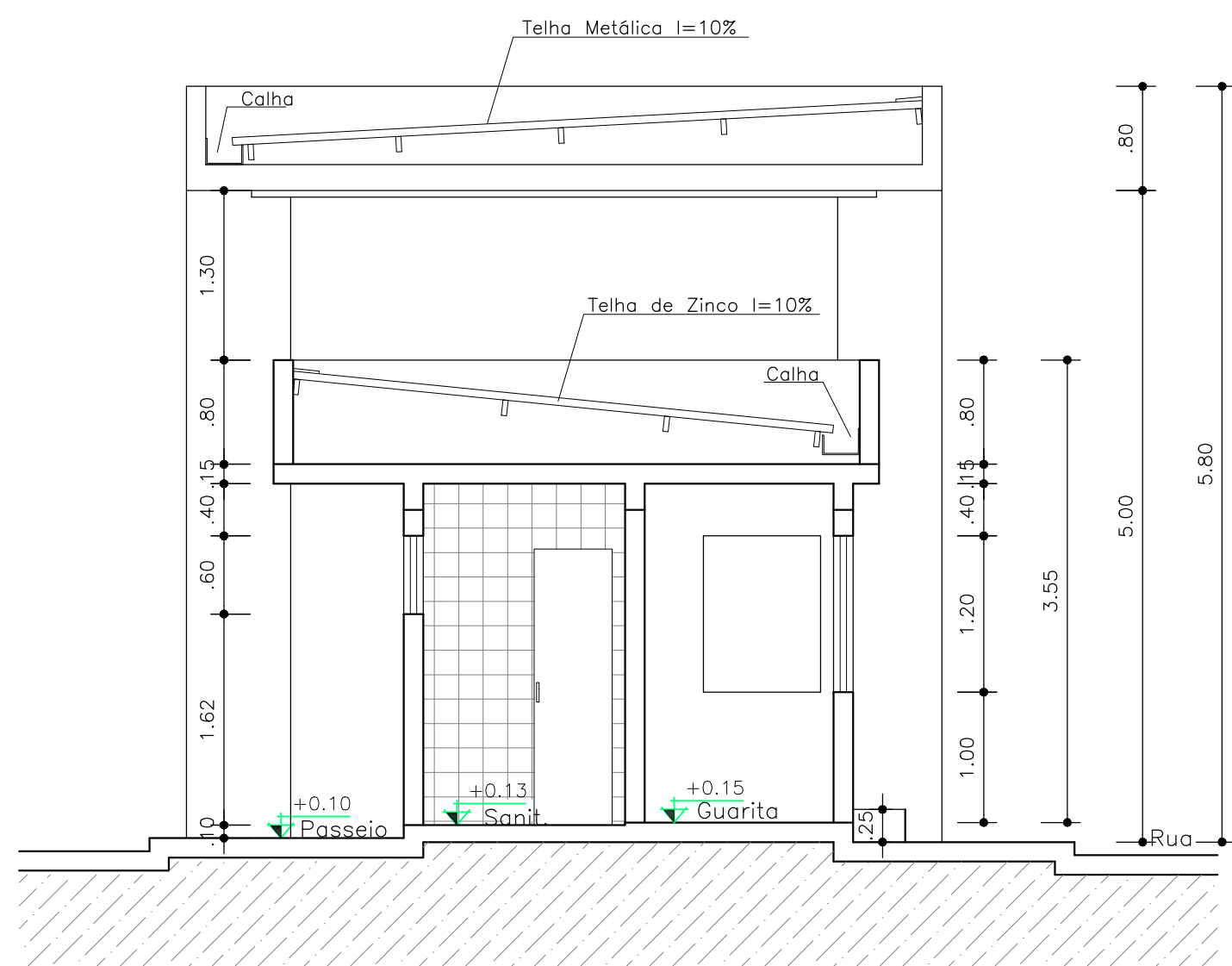
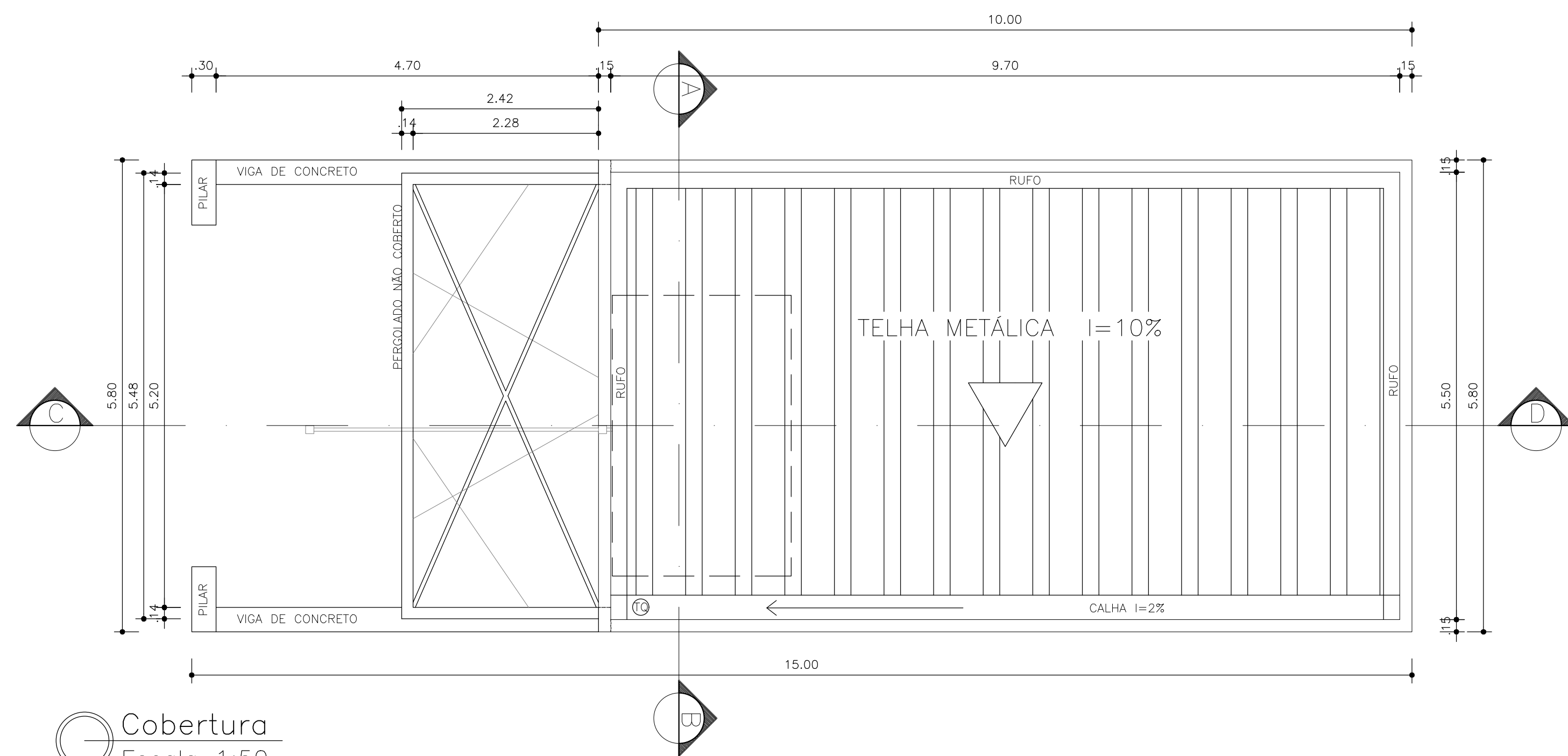


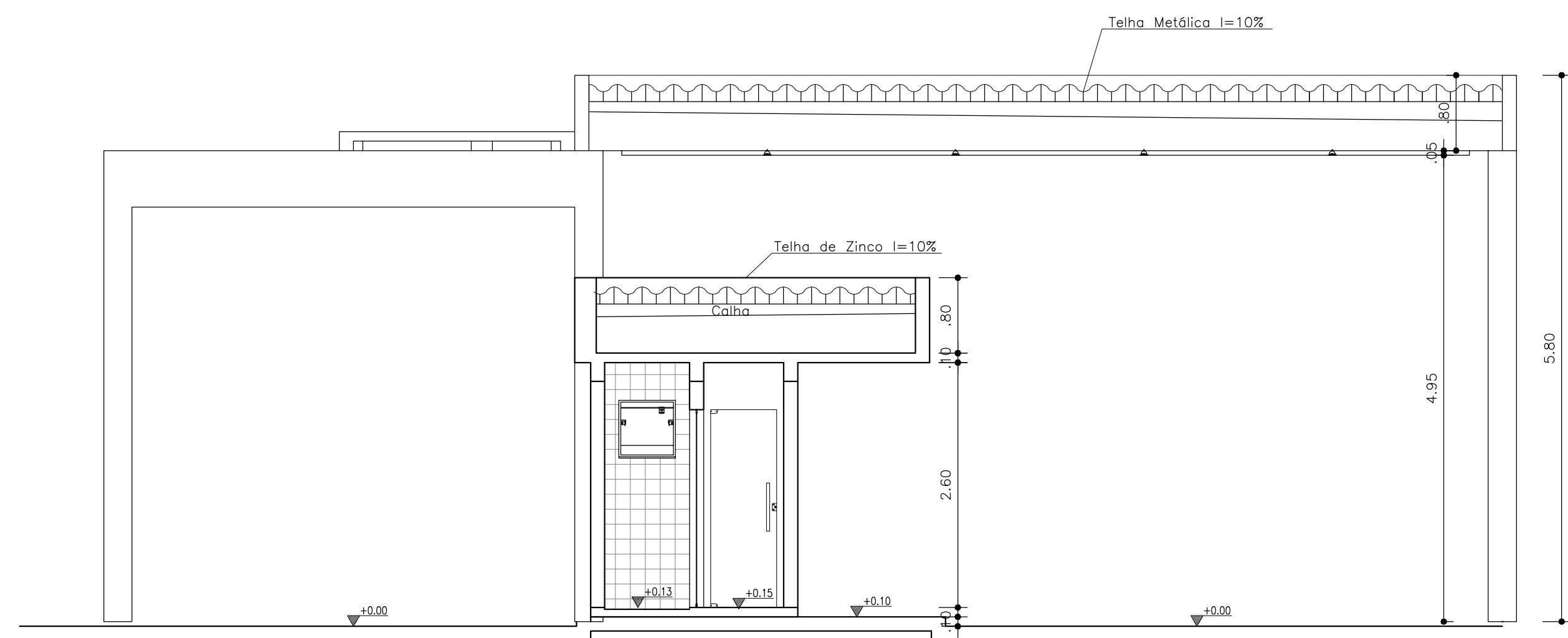
Planta Baixa Guarita  
Escala 1:50



Corte A-B  
Escala 1:50



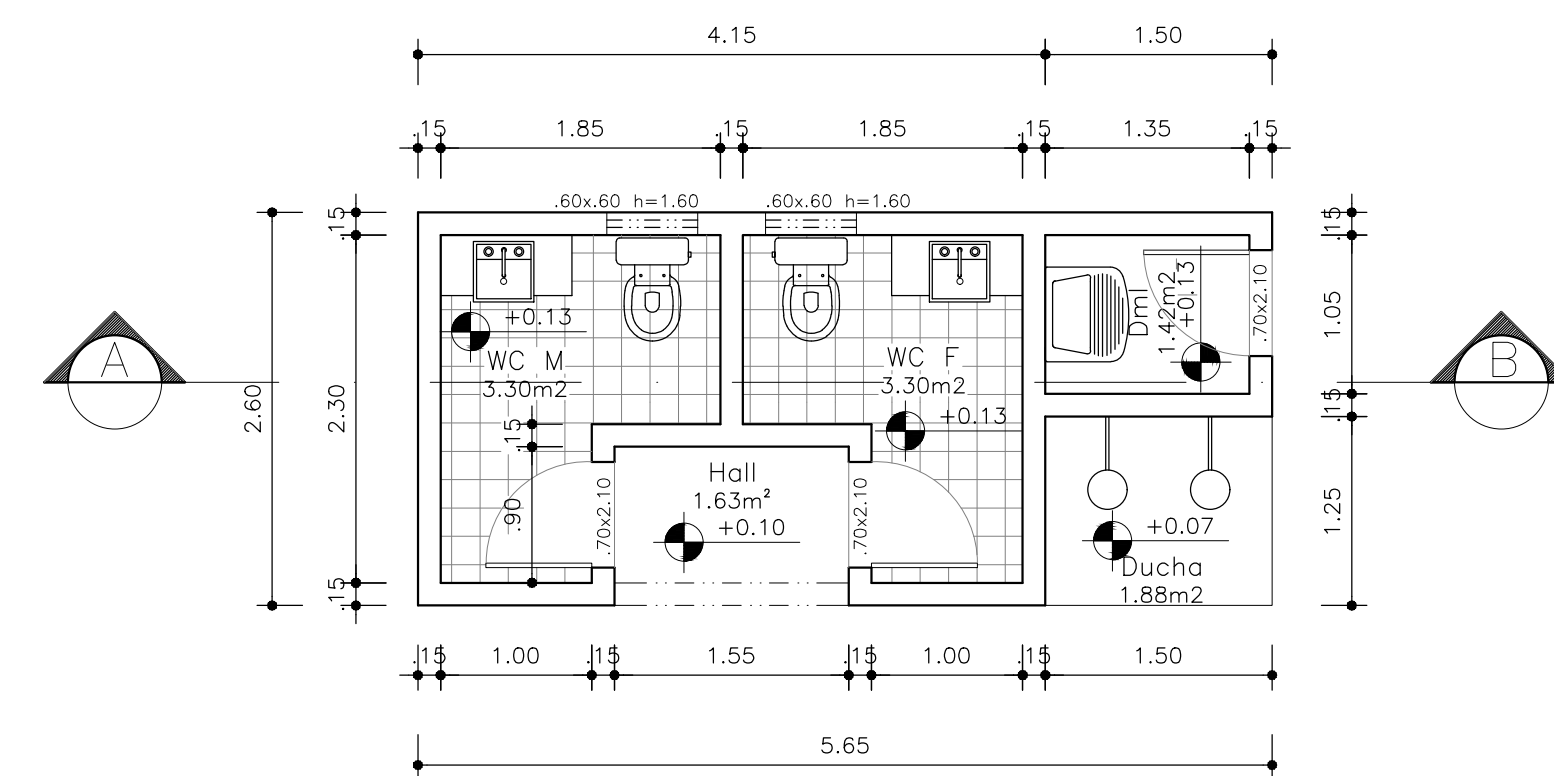
Cobertura  
Escala 1:50



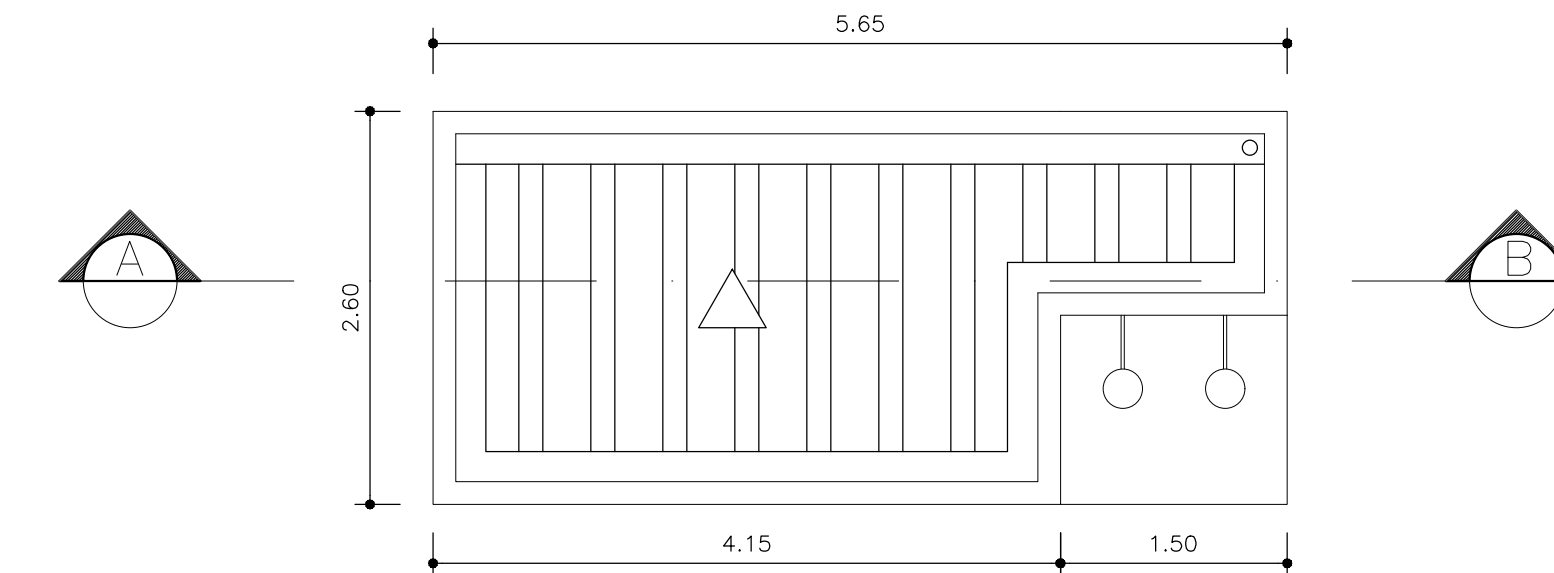
Corte C-D  
Escala 1:50



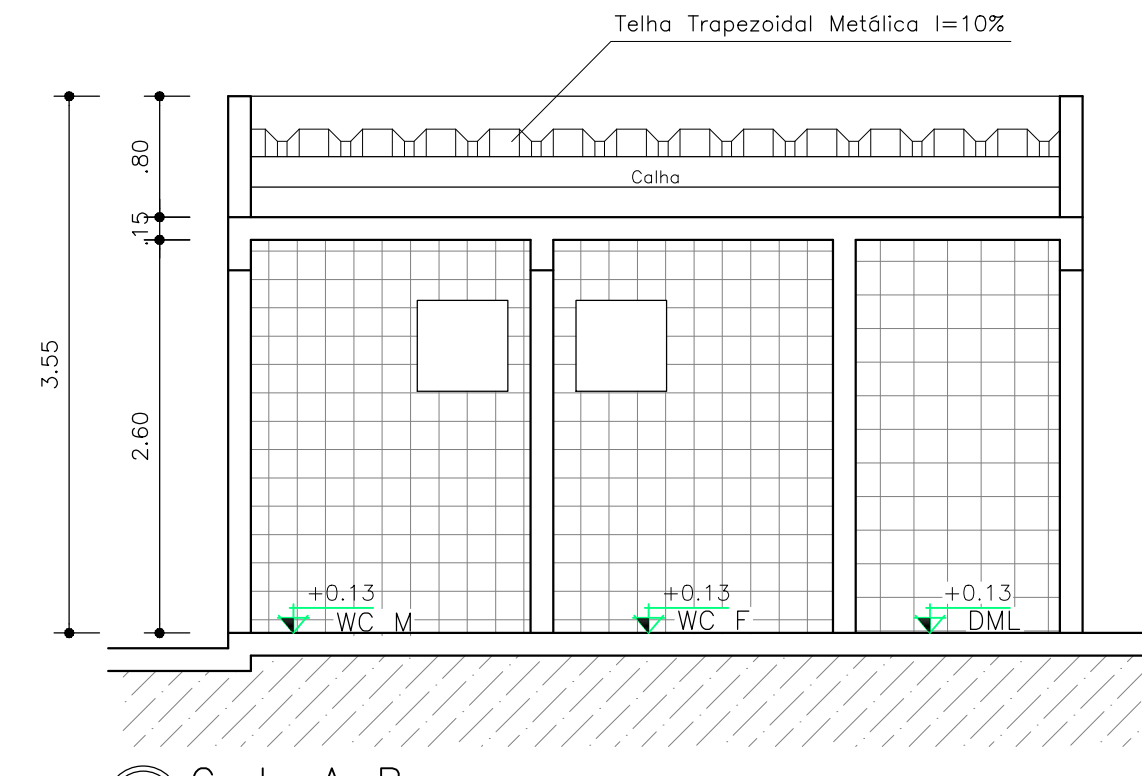
Fachada Frontal  
Escala 1:50



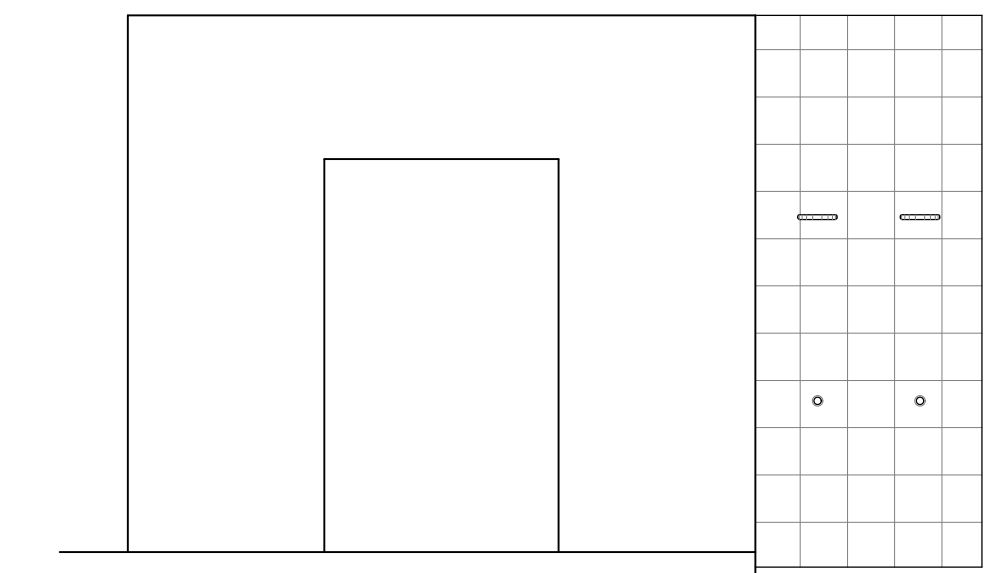
Planta Baixa Sanitários  
Escala 1:50



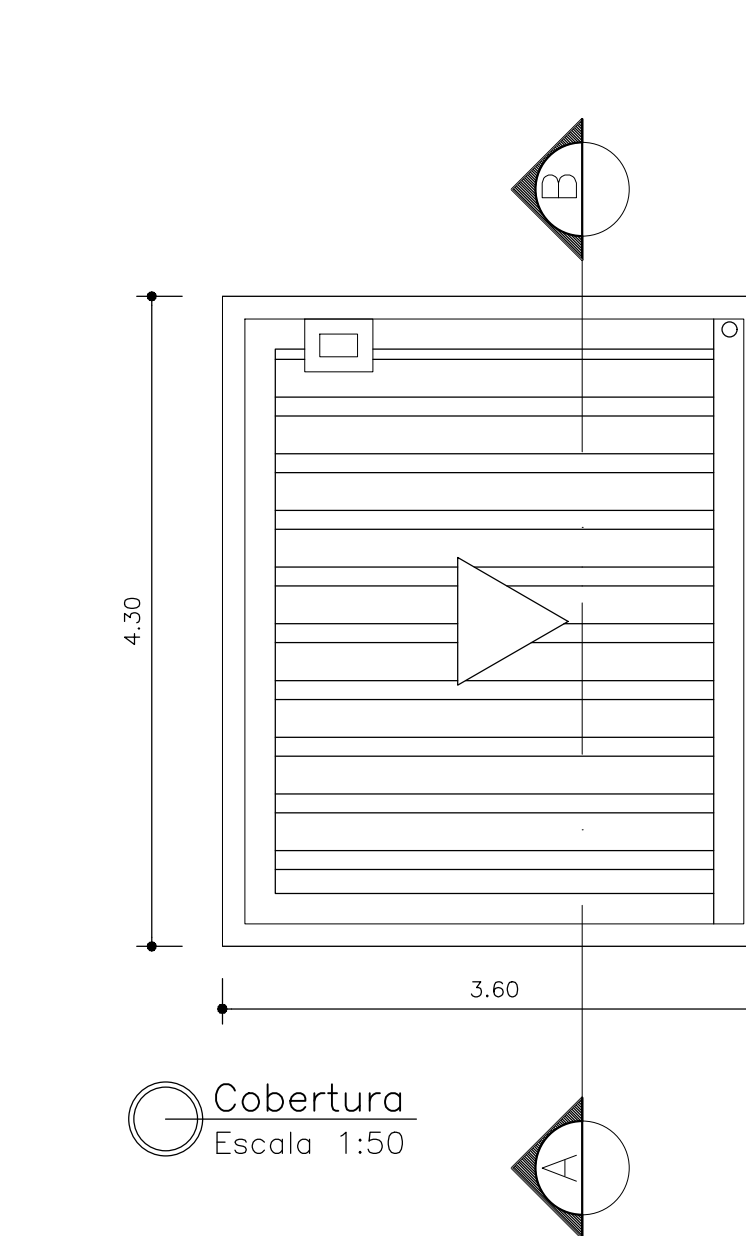
Cobertura  
Escala 1:50



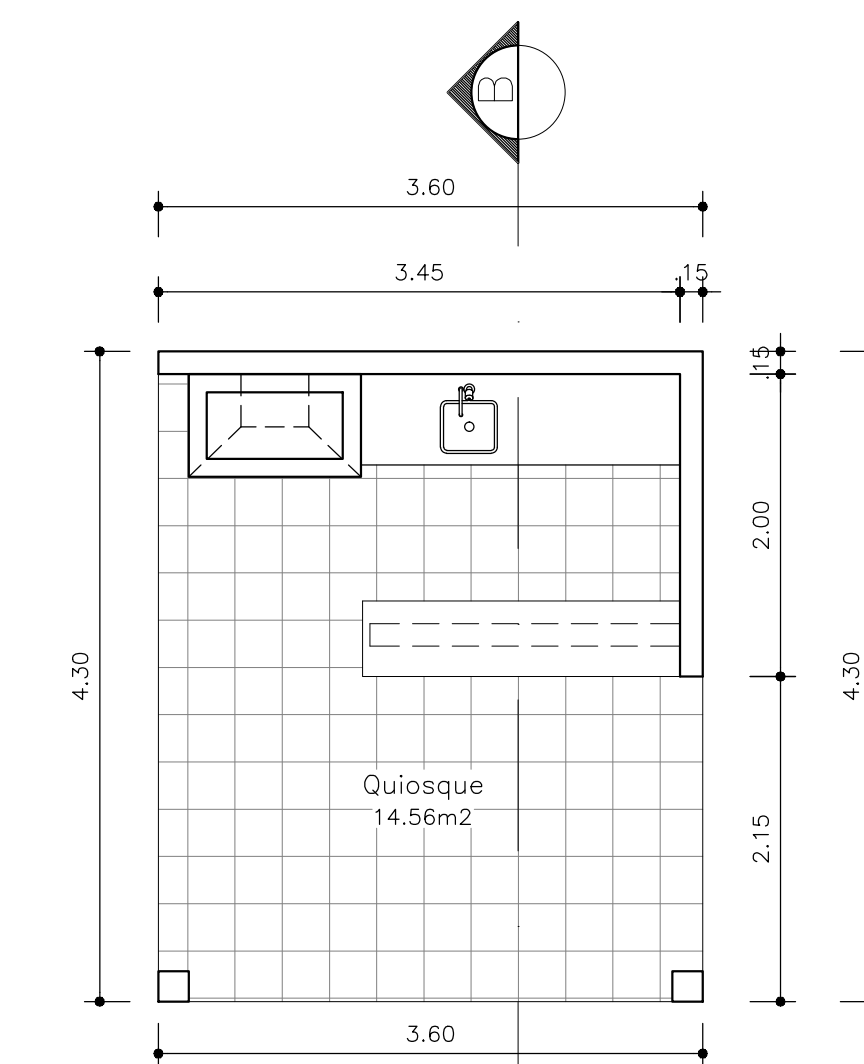
Corte A-B  
Escala 1:50



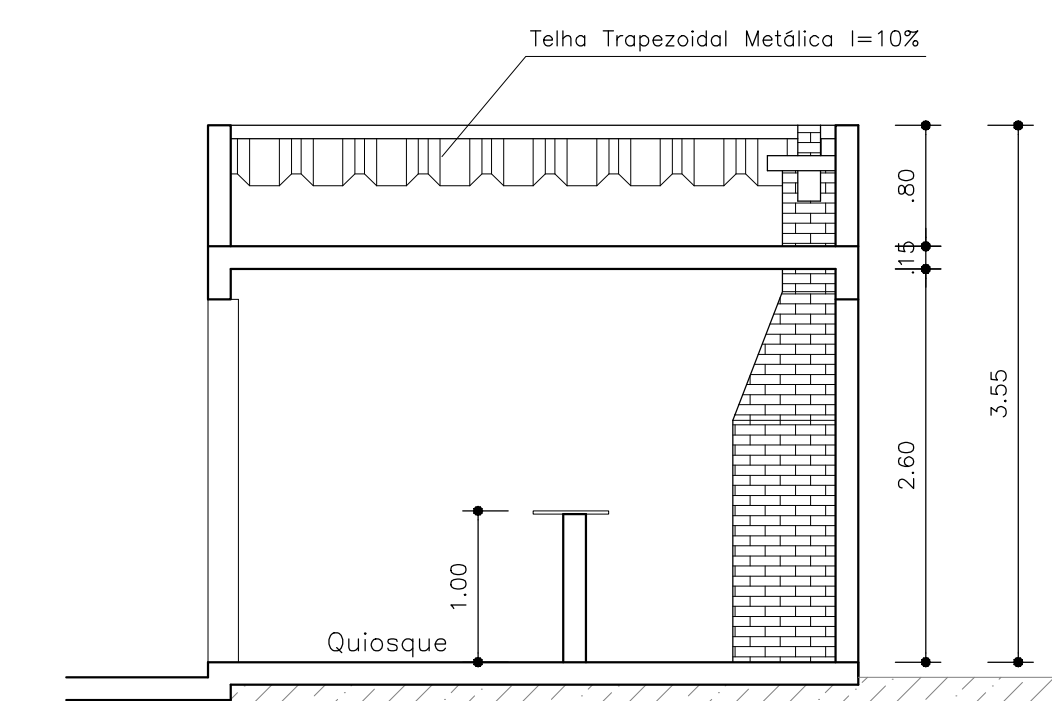
Fachada Frontal  
Escala 1:50



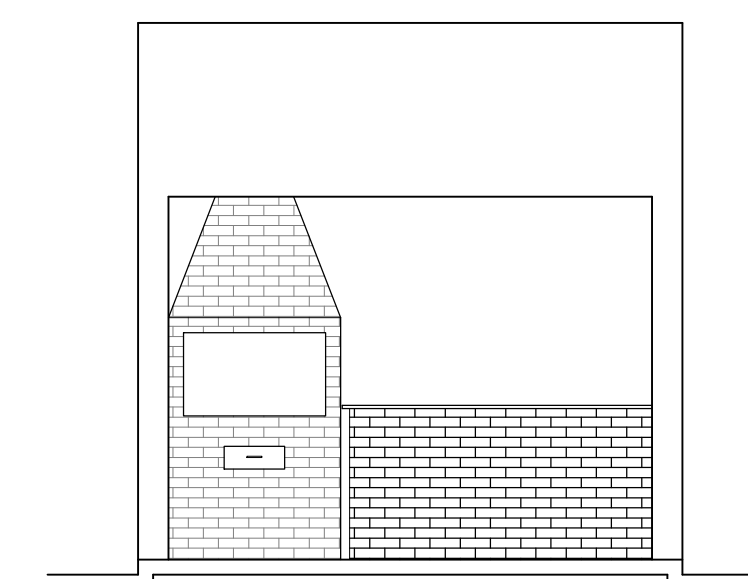
Cobertura  
Escala 1:50



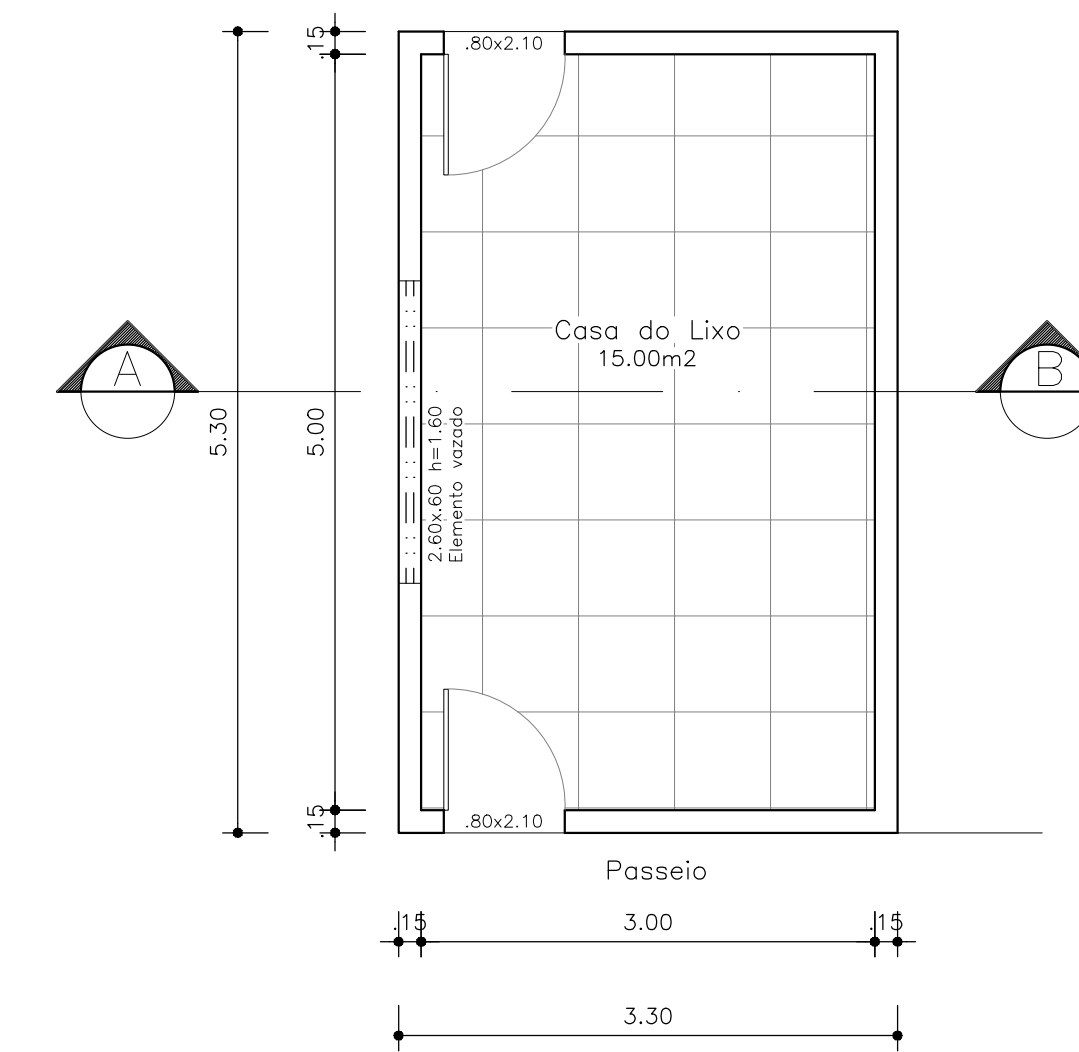
Planta Baixa Quiosque  
Escala 1:50



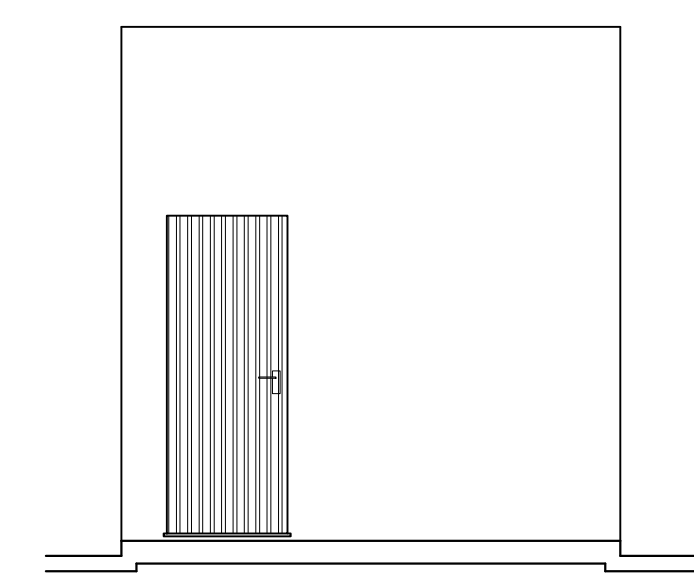
Corte A-B  
Escala 1:50



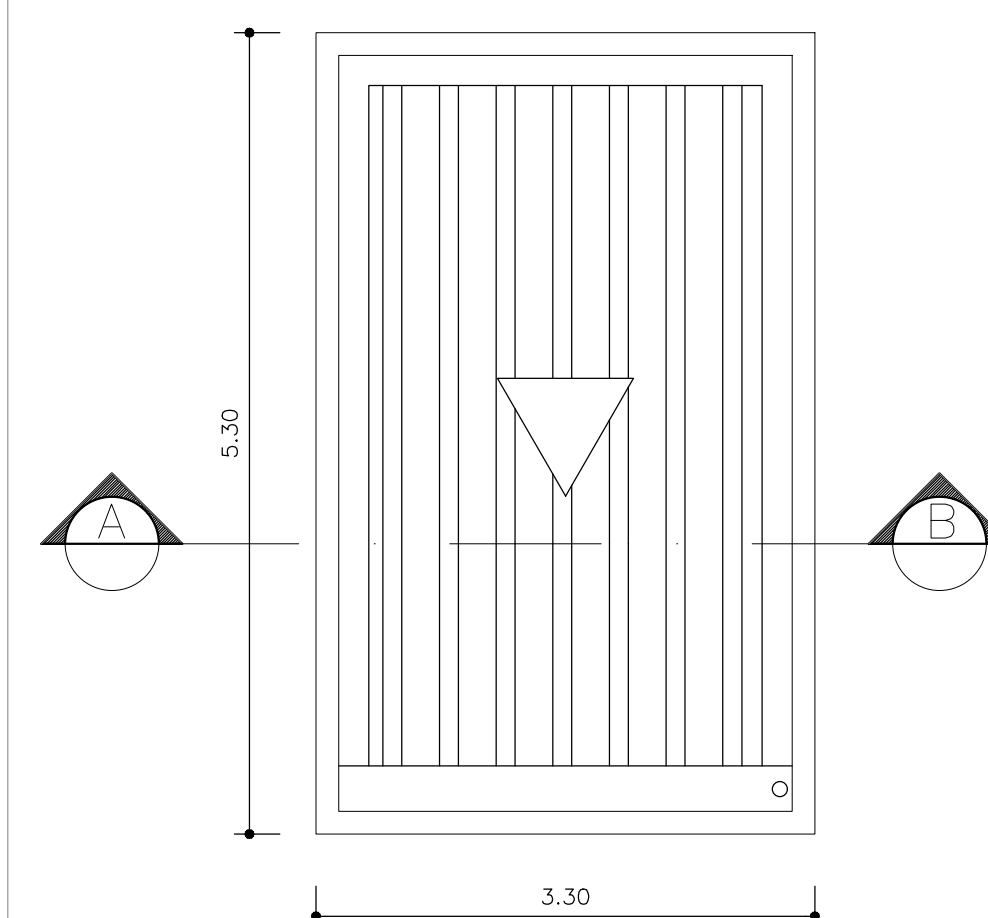
Fachada Frontal  
Escala 1:50



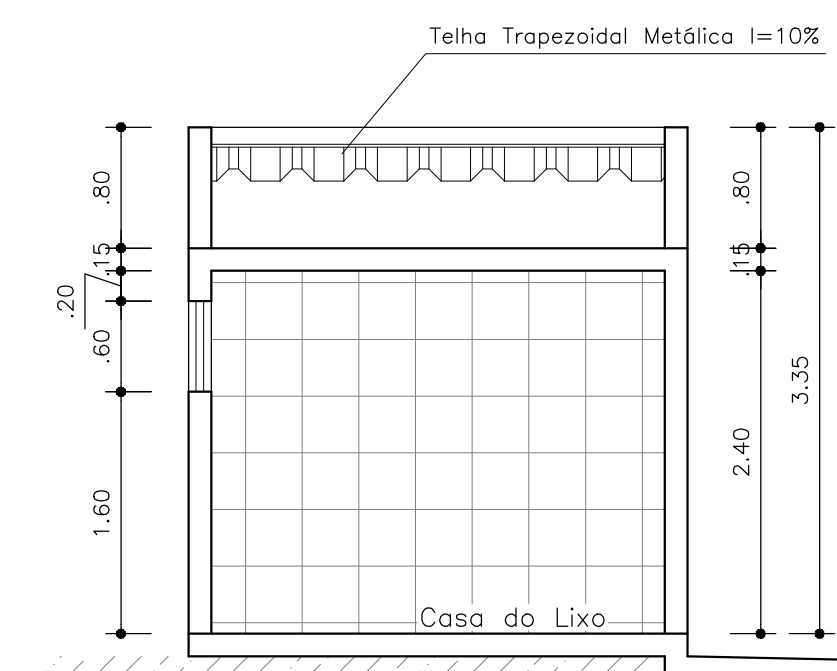
Planta Baixa Casa do Lixo  
Escala 1:50



Fachada Frontal  
Escala 1:50



Cobertura  
Escala 1:50



Corte A-B  
Escala 1:50

NAB	
Reservado a Prefeitura	

PROPRIETÁRIA:		ALTERAÇÃO DO PROJETO ARQUITETÔNICO	
VIA MONTE CLON EMPREENDIMENTOS IMOBILIÁRIOS S/A LTDA		COM AMPLIAÇÃO DO ALVARÁ Nº 913/22	
		CONDOMÍNIO	
		BEM RESIDENCIAL	
		GUARITA, SANITÁRIO, QUIOSQUE E CASA DO LIXO	
LOCALIZAÇÃO:		Nº DA FOLHA	REVISÃO
Av. B - nº130 - Fazenda Nossa Senhora de		12/14	09
Nazare - Gleba 01		DATA:	NOV / 2021
Bairro Arroz Brava		ESCALA:	1:50
VITÓRIA DA CONQUISTA-BA		PROJETO E RESPONSÁVEL TÉCNICO:	
		PEDRO DURLVAL RIZZO ARAÚJO	
		ENG. CIVIL	
		CREA 92.101D-BA	
DESENHO:		REVISÃO	MODIFICAÇÕES
Arthur Soares (77) 9 9139 5975		00	EMISSÃO TÉCNICA
Rafael Amorim (77) 9 8877 4399		08	ALTERAÇÃO PROJETO
		09	PENDÊNCIAS DE PREFEITURA
		DATA:	RESPONSÁVEL
		01/11/2023	PALOMA LIMA
		22/07/2024	PALOMA LIMA
		PÁG. 02 DE 02	